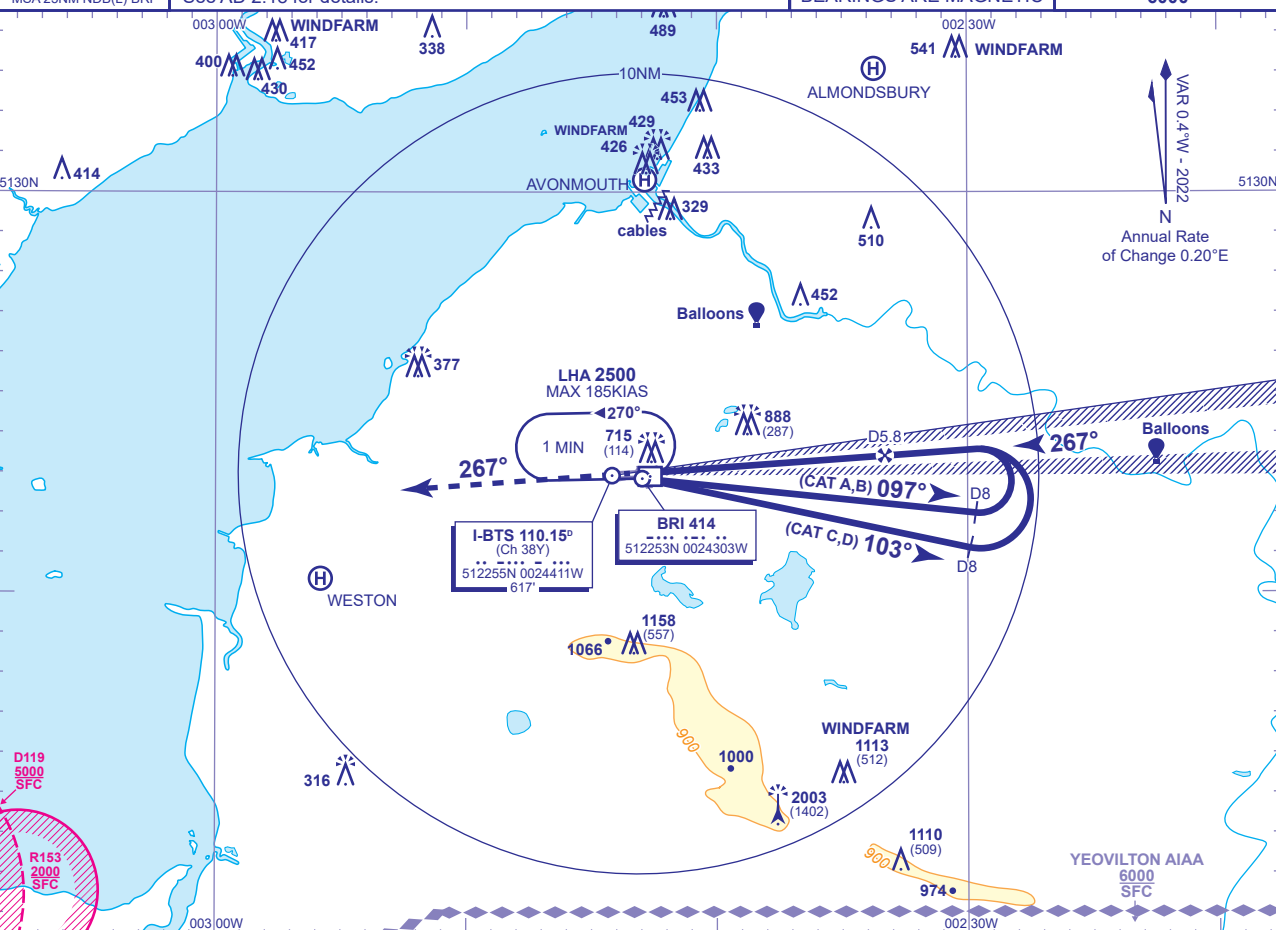


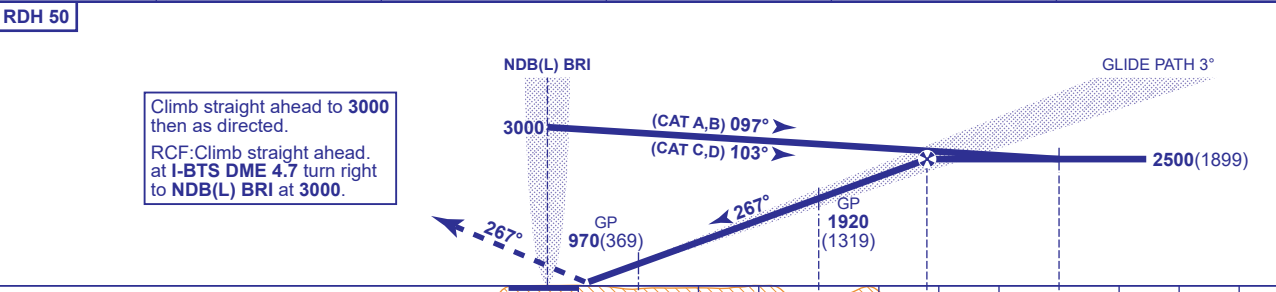
INSTRUMENT APPROACH CHART - ICAO

BRISTOL
ILS/DME/NDB(L)
RWY 27
(ACFT CAT A,B,C,D)

 MSA 25NM NDB(I) BRISTOL	TWR	133.850, 136.080*	BRISTOL TOWER	AD ELEVATION	622	ILS/DME/NDB(L) RWY 27 (ACFT CAT A,B,C,D) TRANSITION ALTITUDE 6000
	APP	125.650, 136.080*	BRISTOL RADAR	THR ELEVATION	601	
	RAD	136.080*	BRISTOL DIRECTOR	OBSTACLE ELEVATION	2003 AMSL (1402) (ABOVE THR)	
	ATIS	126.030	BRISTOL INFORMATION	BEARINGS ARE MAGNETIC		
	*See AD 2.18 for details.					



RECOMMENDED PROFILE GLIDE PATH 3°, 320FT/NM					
DME I-BTS	5	4	3	2	1
ALT(HGT)	2240(1639)	1920(1319)	1610(1009)	1290(689)	970(369)



DME I-BTS zero ranged to THR RWY 27						0	D1	D4	D5.8	D8		
Aircraft Category		A	B	C	D	Rate of descent	G/S KT	160	140	120	100	80
OCA (OCH)	CAT I	750(149)	759(158)	768(167)	779(178)		FT/MIN	850	740	640	530	430
	CAT II	664(63)	672(71)	682(81)	694(93)							
VM(C)OCA (OCH AAL)	Total Area	1050(428)	1190(568)	1460(838)	1560(938)							
	North of RWY 09/27	1050(428)	1190(568)	1290(668)	1320(698)							

AIRCRAFT UNABLE TO RECEIVE DME I-BTS
Advise ATC . Radar Ranges will be provided at 8NM outbound and at 6NM and 4NM inbound (See note 4).

NOTES

- Lowest altitude to commence procedure from hold is 2500.
- Maximum KIAS for procedure is 110KIAS (CAT A); 140KIAS (CAT B); 185KIAS (CAT C,D).
- ILS GP Flags may occur at 8° left of RWY C/L below 2300ft AGL.
- ATC unable to provide Radar Ranges when operating SSR only.

CHANGE (6/24): OBSTACLE ADDED.